

ELECTRIC HAND TOOL ACCESSTYLE

ENGRAVING MACHINE Model ECE-A/130W/FPCS

USER MANUAL



Dear buyer! Thank you for purchasing an Accesstyle brand tool. All our products are manufactured to the highest quality requirements.

We hope that our tool will fully meet your expectations.

For long life, efficient and safe operation, please read this manual carefully and keep it for future reference.

When purchasing a product:

- require checking its operability by trial closing, as well as completeness, according to the delivery set given in this manual;
- make sure that the warranty card is properly executed, contains the date of sale, the stamp of the store and the signature of the seller;

Attention! Power tools are hazardous equipment. To avoid electric shock, fire and/or serious injury you need STRICTLY respect the warnings and instructions. Read all safety warnings and all instructions before operating a power tool. Save all warnings and instructions for future reference

1. General information

1.1 Hand-held cordless engraving machine (hereinafter referred to as engraver) is a high-quality precision tool that, using a wide range of attachments, can perform various work on small items (blanks): grinding, engraving, milling, cutting, cleaning and polishing.

1.2 Type of climatic version of this model UHL 3.1 according to GOST 15150-69 (P 3.2), that is, this model is designed to work in a temperate climate with an operating temperature range of -10 to +40 ° C and relative humidity of not more than 80%. Powered by built-in battery.

1.3 The single-phase double-insulated DC commutator motor installed in the engraver (class II machine according to GOST R IEC 60745-1-2011) provides maximum electrical safety during operation and does not require grounding. The engraver is designed for intermittent operation (S3) with a nominal period of time: work / break - 20 min / 5 min. The degree of protection provided by the shell is IP20 (IEC 60529). Torque from the engine armature is transmitted to the collet chuck (collet with clamping nut). The main working part of the engraver - various holders and bits are attached (see Fig. 2). On the body of the engraver, the arrow indicates the direction of rotation of the cartridge.

1.4 Transportation of the tool is carried out in closed vehicles in accordance with the rules for the carriage of goods in force on this type of transport.

2. Main technical characteristics

2.1. The main technical characteristics of the screwdriver are listed in table below

Power consumption	130 Вт
Voltage	230V, 50Hz
Idle speed	10000-32000 rpm
Number of speeds	6
Collet chuck size	Up to 3,2 mm
Electric motor	collector single-phase
Power cord length with plug	1,8 m

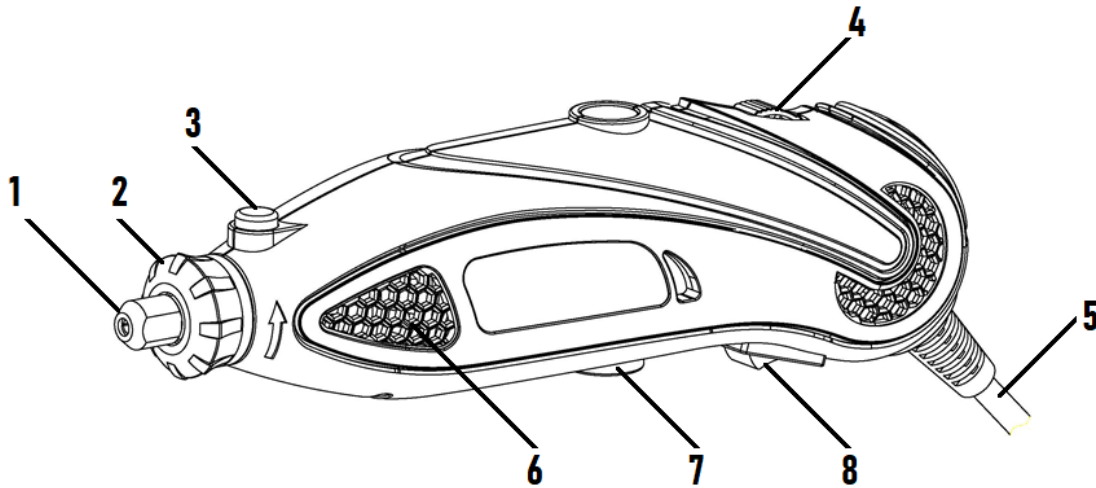
3. Package supply

3.1 The engraver is supplied for sale in the following configuration:

Cordless engraving machine	1 pc.
Instruction	1 pc.
Storage case	1 pc.
A set of tools and accessories	1 set

4. Description of the product

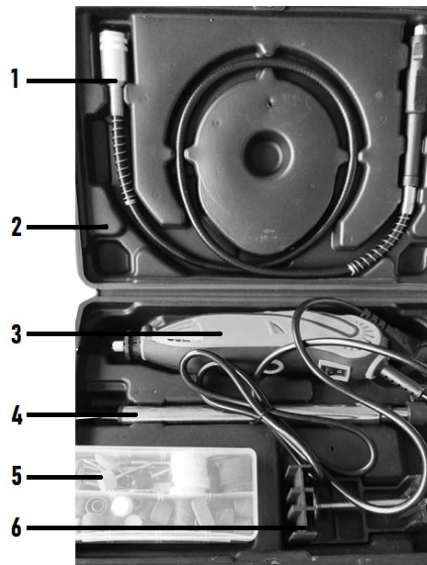
4.1. The main elements of the engraver are shown in Fig. 1



- 1 – Collet clamping nut
- 2 – Plastic nut
- 3 – Shaft lock button
- 4 – Speed switch

- 5 – Charging cable
- 6 - Ventilation holes
- 7 – Brush holder cover
- 8 - Power button

4.2 The engraver with a set of accessories in a case is shown in Fig. 2



PICT. 2

- 1 – flexible shaft
- 2 – Plastic storage case
- 3 – engraver with charging cable

- 4 - stand for fixing the engraver
- 5 - a set of tools and accessories
- 6 - stand base

This engraver with a set of accessories allows you to perform a wide range of work on hard and soft materials: cutting, grinding, polishing, engraving, drilling, cleaning. You can use the flexible shaft to work in hard-to-reach places. The stand allows you to fix the engraver for more comfortable work.

5. Safety

5.1 You must use the engraver only in accordance with the purpose indicated in the manual.

5.2 When operating it is necessary to comply with all the requirements of this manual, handle the engraver carefully, do not expose it to shocks, overloads, or dirt.

5.3 The use of a double-insulated commutator drive ensures maximum electrical safety when operating from a 230 V AC mains without the use of personal protective equipment and grounding devices.

5.4 During the work of the engraver, the following rules must be observed:

- use personal protective equipment. Use a face shield or goggles depending on the type of operation. If necessary, use a respirator, hearing protection, protective gloves or a special apron that protects you from abrasive particles of the processed material. Eyes must be protected from foreign shredding flying in the air, produced during various operations;
- the outer diameter and thickness of the bit supplied with the tool must correspond to the dimensions of the collet chuck of your power tool;
- the allowable number of revolutions of the working tool must be no more than the maximum number of revolutions indicated on the engraver;
- use clamping devices to fasten the workpiece;
- keep your hands at a safe distance from the rotating bit;
- it is forbidden to put down the tool when the electric motor is running and before the moving parts stop;
- in no case do not tie the key for clamping the collet chuck to the tool with wire, twine, etc.;
- do not place the power tool on a dusty surface, dust particles may get inside the mechanical part of the power tool;
- keep in mind that even during normal operation wire brushes lose their wires. Do not overload wire brushes with excessive pressure;
- if it is recommended to use a dust-proof collet for work, then exclude the possibility of contact between the wire brush and the collet.

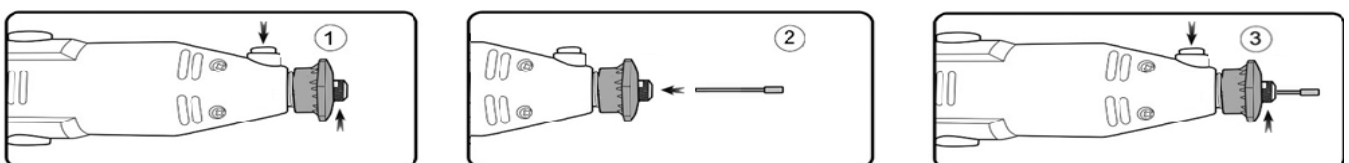
5.5 When using the engraver It is prohibited:

- drop the engraver;
- use the engraver in rooms with an explosive, chemically active environment that destroys metals and insulation;
- insert a larger shank into a smaller collet;
- operate the engraver in conditions of drops and splashes exposure, in open areas during snowfall and rain;
- work with the engraver at temperatures above 40°C;
- press the stopper button while the tool is running;
- leave activated engraver unattended;
- carry the tool by the cord and pull the cord to remove the plug from the socket;
- do not turn on the engraver again while the abrasive bit is inside the workpiece;
- install attachments that are not provided and recommended by the manufacturer specifically for this power tool;
- operate the engraver if, during its operation, at least one of the following malfunctions occurs:
 - a) damage to the power plug or power cord;
 - b) the switch is faulty or its operation is fuzzy;
 - c) sparking of brushes on the armature collector, which is accompanied by the appearance of an all-round fire on its surface;
 - в) искрение щёток на коллекторе якоря, которое сопровождается появлением кругового огня на его поверхности;
 - d) damage to the abrasive stone; circles, brushes or other attachments;
 - e) the appearance of a smell or smoke of burning insulation;
 - f) breakage or appearance of cracks in body parts.

6. Preparations

6.1 Disconnect the power cord from the mains before installing and fixing the working head.

6.2 Setting up the working tool (see fig.3)



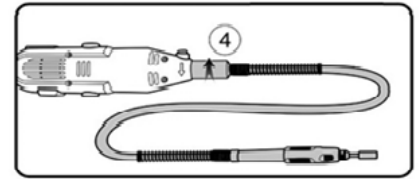
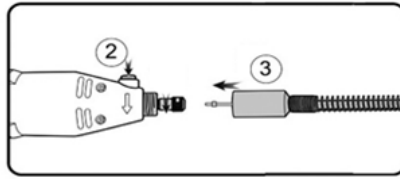
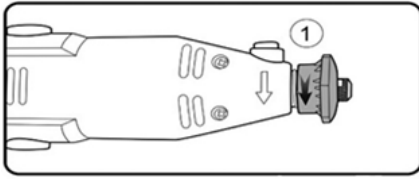
1) Press the shaft lock button. Loosen the collet clamping nut with the wrench provided.

2) Install the necessary working attachment into the collet chuck.

3) Secure the bit in the collet by tightening the clamping nut tightly while holding the lock button securely.

6.3 To replace the collet, it is necessary to: completely unscrew the clamping nut, remove the collet, install the collet of the required size and fix it with the nut.

6.4 Fixing the flexible shaft (see fig. 4)



1) unscrew and remove the plastic nut;

2) by pressing the lock button, loosen the clamping nut of the collet;

3) insert the end switch of the flexible shaft into the spindle as far as it will go;

4) while holding the stopper button, tighten the collet nut and screw the union nut of the shaft instead of the plastic nut.

7. Operation

7.1 Prepare the workpiece for processing.

7.2 Install in the collet chuck (or on the flexible shaft) necessary bit from the set.

7.3 After connecting the tool to the power supply, turn the power button to the "I" position - on.

7.4 You can change the speed of the shaft rotation using the speed switch.

7.5 After turning off the tool, hang it by the hook on the stand only after the motor has come to a complete stop. Do not place the power tool on a dusty surface: dust particles may get inside the mechanical part of the engraver.

8. Service life, storage and disposal

8.1 Service life of the engraver is 5 years.

8.2 The engraver should be stored in warehouses in the manufacturer's packaging at an ambient temperature of +1 to +40C and a relative humidity of not more than 80% at a temperature of +25C without moisture condensation. The storage room must be free of conductive dust, acid and alkali vapors, and gases that cause corrosion and destroy insulation.

8.3 The specified service life is valid if the consumer observes the requirements of this manual.

8.4 When the resource of the engraver is completely exhausted, it is necessary to dispose of it in compliance with all norms and rules. To do this, you need to contact a specialized company that, in compliance with all legal requirements, is engaged in the professional disposal of electrical equipment.

9. Maintenance

Attention! Make sure that the power supply is disconnected from the engraver when mechanical part maintenance work is carried out.

9.1 Changing the brushes

1) unscrew the brush holder covers from the housing;

2) remove the used brushes from the brush holders and replace them with new ones;

3) screw the covers of the brush holders;

9.2 Regularly clean the body of the engraver with a soft cloth, preferably every time you stop working with the engraver.

Make sure that the ventilation holes are not clogged with dust and dirt.

9.3 To clean heavily soiled tool, use a soft cloth dampened with soapy water.

SERVICE MAINTENANCE

Repair of the tool must be carried out only by qualified personnel at authorized service centers.

ATTENTION! The use of any accessories and attachments, or the performance of any operation other than those recommended in this manual, may result in injury or damage to the instrument.

ACCESSTYLE TRADEMARK PRODUCT WARRANTY TERMS.

1. All of the following warranty conditions are subject to the current legislation of the Russian Federation governing the sale of consumer goods.
2. The product warranty period starts from the date of original purchase and is 1 (one) year.
3. The service life of the product is 5 (five) years from the date of purchase or, in its absence, from the date of production, conditioned upon a full compliance with the storage conditions and operating rules, as well as the correct assembly and installation of the tool specified in this manual.
4. The warranty does not cover:
 - 4.1. Cables, adapters, accessories, covers, carrying cords, clips, holders of various types, packaging and documentation.
 - 4.2. Normal wear or damage to the outer surfaces of the product.
 - 4.3. Defects caused by moisture, dampness, extreme temperatures, microwave energy, pressure, shock, insects, animals, liquids, food, dust, chemicals.
 - 4.4. A product that has been repaired or modified by persons other than those specified in clause 5.
 - 4.5. A product that was not used for its intended purpose, as well as in violation of the operating rules set forth in the user manual.
 - 4.6. Defects caused by the use of incompatible equipment or accessories.
5. Warranty service is performed by organizations authorized for this - authorized service centers, the list of which is contained on the support page of the website <http://www.accesstyle.ru> and is available by phone 8-800-250-07-17. During the warranty period, the elimination of manufacturing defects is free of charge for the buyer upon presentation of the original completed warranty card and / or documents confirming the fact and date of purchase (cash receipt). Documents must contain the name of the product model, date of sale, details of the trading organization. In the absence of these documents, the authorized organization has the right to refuse warranty service.
6. The warranty period is extended by the maintenance period. The replacement of components, utilities or a complete set of the product does not lead to the establishment of new warranty periods for the entire product and the replaced parts.
7. Under no circumstances shall the Manufacturer, Importer and organizations authorized by him be liable for any special, incidental, direct or indirect damage or loss, including, but not limited to, lost profits, loss or inability to use information or data, costs of restoring information or data, losses caused by interruptions in business, production or other activities arising from the use or inability to use the Accesstyle product.